

Madrona Tree

By Mary Scott Huff

1



In Honor of the 15th annual Madrona Winter Retreat, we proudly present Madrona Tree, in two different versions. Inspired by the lush foliage and bright berries of our namesake tree, the stranded colorwork hats are worked in rounds, from the bottom up: The cap starts with a hem, the helmet with a provisional cast on. After knitting the top, remove the provisional cast on and work the helmet sides from the live stitches down. Garter stitch bands add textural interest to the cap, while the helmet sports ribbed trim with a tipped edge. Whimsical tassels finish both with flair. Which Madrona Tree will you be?

Finished Circumference

21" (51 cm), to fit an adult

Yarn

Medium



Shown Here: Blue Moon Fiber Arts Socks That Rock Lightweight 100% Superwash Merino (360 yds/329 m, 4.5 oz/ 127g), approx. 25g each:

- A True Blood Red
- B Mossay
- C Quilla (approx. 50g for helmet version)
- D Ravenscroft
- E Brick
- F The Green That Sings
- G Tumbleweed
- H Amethyst
- I Cozy Fierce and Dirty Orange



Madrona Tree

By Mary Scott Huff

2

Needles

1 size 2 (2.75 mm) 16" circular, 1 set size 2 (2.75 mm) DPN, or size to achieve gauge.

Gauge

30 sts and 36 rows = 4" [10 cm] in 2-strand colorwork.

Notions

8 removable stitch markers, tapestry needle, cardboard scrap, waste yarn for provisional CO.

Pattern Notes

The sample hats were made using 9 colors, but you can easily eliminate/add as desired. For example, the leaves in the samples were worked in 3 colors of green, but could have used only 1. Take time to plan which elements you'll knit in which colors before you begin, making notes in the pattern.

Cap Instructions

Lower Edge

With A, CO 168 sts. PM and join without twisting for working in rnds. Knit 5 rnds. Next rnd, purl. Knit 5 rnds. Next rnd, fold hem to WS along purl ridge. Work each st together with its corresponding CO loop to form hem. Work row 1 of cap chart.

Work to this point for homework if you plan to attend Mary's "2 Strands = Not Scary" class.



Sides

Work rows 2-45 of Cap chart.

Crown

With D, knit 1 rnd, PM in 11th st, and every 21st st thereafter.

Dec Rnd: *knit to last st before marked st, sl2-l1-p2sso.

Rpt from * to end of rnd. 16 sts dec'd.

Repeat dec rnd every 3rd rnd, 9 more times. 8 sts. Break yarn and thread tail through rem sts. Fasten securely on WS.

Work the hem shown here, or a different edging of your choice. Not sure yet? Work a provisional CO and make up your mind later.

Tassel

Cut cardboard to a width of 7" (18 cm). With A, wrap around cardboard 50 times. Cut yarn. Cut a length of A approx. 12" (30 cm) long. Tie around wrapped strand firmly. Remove piece from cardboard and cut loops opposite tie. With H, wrap tassel firmly and secure wrapping yarn. Thread ends of wrapping yarn through tapestry needle, thread under wraps & trim. Trim tassel ends evenly.

Madrona Tree

By Mary Scott Huff

3

Finishing

Weave in ends and block cap. With yarn and tapestry needle, embroider duplicate sts as indicated on chart. Sew tassel to top of cap securely.

Helmet Instructions

Lower Edge

With waste yarn, CO 168 sts using provisional CO method. PM and join without twisting for working in rnds. With C, Knit 2 rnds. *Work to this point for homework if you plan to attend Mary's "2 Strands = Not Scary" class.*

Sides

Work rows 1-36 of Helmet chart.

Crown

Knit one rnd, PM 11th st, and every 21st st thereafter.

Dec Rnd: *knit to last st before marked st, sl2-l1-p2sso. Rpt from * to end of rnd. 16 sts dec'd.

Repeat dec rnd every other rnd, 9 more times. 8 sts. Break yarn and thread tail through rem sts. Fasten securely on WS.

Lower Helmet

Remove waste yarn from CO edge, placing 1st 42 sts on holder, and rem 122 sts on needle. With WS facing, rejoin working yarn. Purl 1 row.

Dec Row(RS): k2, SSK, k to last4 sts, k2tog, k2. 2 sts dec'd. Next row (WS): Purl.

Rpt these 2 rows 5 more times. 114 sts. Work even in St st until piece measures 2" from last edge decrease row.

Bottom Edge Shaping

Shape left earflap

Short-row 1 (RS): K48, wrap next st, turn.

Short-row 2 (WS): P48.



Madrona Tree

By Mary Scott Huff

4

Short-row 3: K42, wrap next st, turn.

Short-row 4: P42.

Short-row 5: K36, wrap next st, turn.

Short-row 6: P36.

Short-row 7: K30, wrap next st, turn.

Short-row 8: P30.

Short-row 9: K24, wrap next st, turn.

Short-row 10: P24.

Short-row 11: K18, wrap next st, turn.

Short-row 12: P18.

Short-row 13: K12, wrap next st, turn.

Short-row 14: P12.

Short-row 15: K6, wrap next st, turn.

Short-row 16: P6.

Next row (RS): Knit to end, working wraps tog with wrapped sts.

Shape right earflap

Short-row 1 (WS): P48, wrap next st, turn.

Short-row 2 (RS): K48.

Short-row 3: P42, wrap next st, turn.

Short-row 4: K42.

Short-row 5: P36, wrap next st, turn.

Short-row 6: K36.

Short-row 7: P30, wrap next st, turn.

Short-row 8: K30.

Short-row 9: P24, wrap next st, turn.

Short-row 10: K24.

Short-row 11: P18, wrap next st, turn.

Short-row 12: K18.

Short-row 13: P12, wrap next st, turn.

Short-row 14: K12.

Short-row 15: P6, wrap next st, turn.

Short-row 16: K6.

Next row (WS): Purl to end, working wraps tog with wrapped sts.

Bottom Edging

With B, knit 1 row. Work 3 rows k1 p1 rib. Next row (RS), with H, knit. Work 2 rows k1 p1 rib. BO in patt.



Madrona Tree

By Mary Scott Huff

5

Front Edging

Place 42 held sts onto spare needle. With RS facing, color B and beg at lowest point of ribbed edge on right helmet edge, pick up and knit 44 sts. Knit 42 sts from spare needle. Pick up and knit 44 sts along left helmet edge. 130 sts. Work rows k1 p1 rib. Next row (RS), with H, knit. Work 2 rows k1 p1 rib. BO in patt.

Tassels

Cut cardboard to a width of 5" (13 cm). With A, wrap around cardboard 50 times. Cut yarn. Cut a length of A approx. 12" (30 cm) long. Tie around wrapped strand firmly. Remove piece from cardboard and cut loops opposite tie. With H, wrap tassel firmly and secure wrapping yarn. Thread ends of wrapping yarn through tapestry needle, thread under wraps & trim. Trim tassel ends evenly. Make 2nd tassel to match.

Finishing

Weave in ends and block helmet. With yarn and tapestry needle, embroider duplicate sts as indicated on chart. Sew tassels to lower points securely.

Abbreviations

beg: begin(ning)

BO: bind off

CO: cast on

dec ('d): decrease (d)

dpn(s): double-pointed needles

k: knit

k2tog: knit 2 together

p: purl

patt: pattern

pick up and knit: Insert tip of right-hand needle into fabric,

wrap yarn around needle as when knitting, and pull new loop of yarn forward through fabric

PM: place marker

rem: remain(ing)

rnd(s): round(s)

rpt: repeat

RS: right side

sl2-k1-p2sso: Slip 2 sts as if to k2tog, k1, pass 2 slipped sts over knit st

ssk (slip, slip, knit): Slip a stitch as if to knit to right-hand needle, slip a second stitch as if to knit, slip both stitches back to left-hand needle and knit together through back loops

St st: stockinette stitch

st(s): stitch(es)

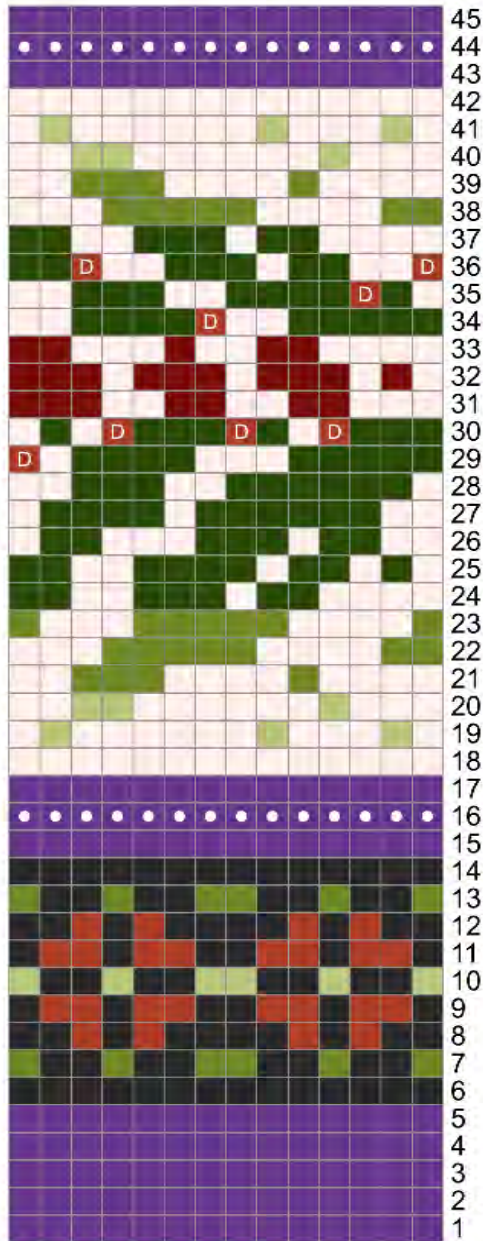
WS: wrong side



Madrona Tree

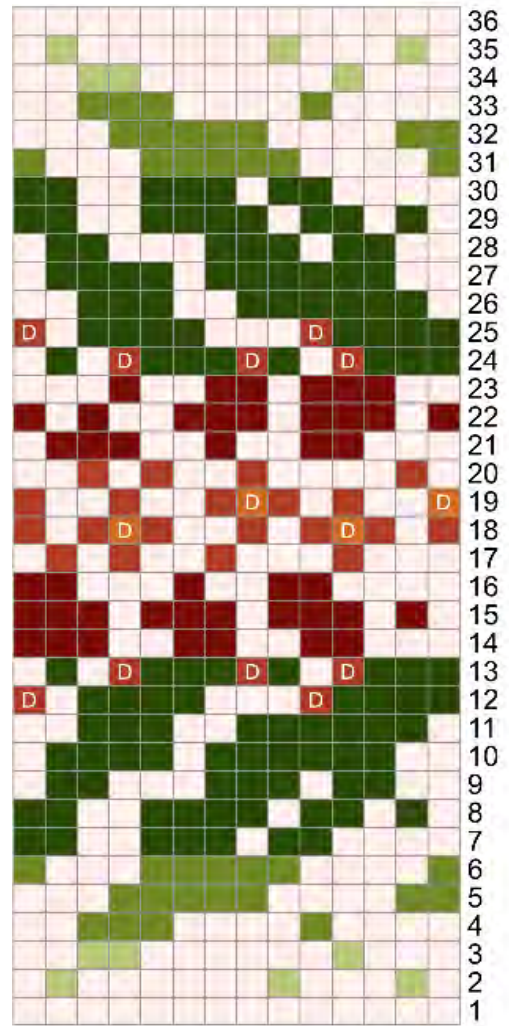
By Mary Scott Huff

Madrona Tree Cap Chart



Work 14 Repeats

Madrona Tree Helmet Chart



Work 14 Repeats

Yarn

- True Blood Red
- Mossay
- Quilla
- Ravenscroft
- Brick
- The Green That Sings
- Tumbleweed
- Amethyst
- Cozy Fierce and Dirty Orange

Stitches

- k
- p
- Duplicate St